



Norfolk Offshore Wind Zone Dereham | Information Pack

A collection of materials shared at public
drop-in events in February 2025



Contents

Section	Page Number
Event poster	4
Investing in East Anglia	6
Reinstatement	8
Onshore substation works	9
Mobilisation areas	10
Ecology	11
Maps and figures	12-13
Images	14
Stay connected	15

Hello

Last year, the Norfolk Zone construction team completed installation of 17km of underground ducting in the westernmost section of our cable route. Construction will now continue in 2025 along the remainder of the route, up to Happisburgh on the coast, where our offshore cables will make landfall.

To ensure the local community is kept up to date, we continue to hold public information drop-ins across the cable route, in town/village halls, and public locations like libraries, markets and schools. Information packs from each of these events are made available at

www.nowzone.co.uk. If you have any questions about the Norfolk Zone, please don't hesitate to get in touch. You'll find information on how to do so throughout the pack, and on the last page. Many thanks for your continued interest in our projects.

Best regards,
The Norfolk Zone Team
norfolk@rwe.com





Norfolk Offshore Wind Zone Community Drop-in Information Event

Sharing information about upcoming works in your area

- Where**
2nd Dereham Scout Hall, Southaven,
South Green, Dereham, NR19 1PU
- Date**
18th February 2025
- Time**
13:00 - 17:00

This event invites local residents and members of the public to drop in and meet with the project team, who will be on hand to share and discuss the latest updates. Key topics will include: updates on reinstatement and completed works across Breckland. We will return to Dereham with another event towards the end of 2025 to share information about cable installation works which are scheduled for early 2026.

RWE have begun onshore construction of Norfolk Offshore Wind Zone. Once fully operational, the Norfolk Zone could generate 4.2GW of electricity, which is enough to power more than 4 million UK households.

www.nowzone.co.uk

Contact us: norfolk@rwe.com



Investing in East Anglia

£4.4 million investment boost for local businesses as work on Norfolk Offshore Wind Zone ramps up

In a major boost for the regional economy, dozens of local businesses have scooped **£4.4 million** worth of contracts from main contractor on the Norfolk Offshore Wind Zone, J. Murphy & Sons Limited.

Contracts have been awarded to **36 East Anglian businesses**, providing opportunities for hundreds of local people to work on the first stages of construction of the Norfolk Offshore Wind Zone. Local companies are using a workforce recruited from nearby towns and villages, with many more set to be employed. Norfolk Offshore Wind Zone will directly support around 1,000 jobs a year during the seven-year construction programme.

Denise Hone, senior stakeholder and community engagement manager for the Norfolk Offshore Wind Zone, said: "Since we started planning the project nearly 10 years ago, we have been working with local companies. It has always been our plan to invest as much as we can in Norfolk and its businesses because the wind farms will be operating for more than 30 years.

"To see this coming to fruition - seeing small, local businesses supplying their

services and benefitting from playing a part in this world-leading wind farm - is wonderful. It's evidence that we are doing what we have always said we would do: work in Norfolk, with Norfolk and for Norfolk."

Over the first 11 months of the project, 36 companies from Norfolk and Suffolk

36

have secured contracts with Murphy. So far, £4.4 million has been invested in and spent with East Anglian businesses. As the project progresses through 2024, services such as drainage, scaffolding, sampling, cleaning, catering, and horizontal directional drilling (HDD) will be required.

450

By 2025, the project will hit its peak work period. Murphy plans to create 8 apprentice positions, employ 450 ground staff, install 540 km of ducting, 120 km of fencing, and require 77,000 m³ of sand and backfill for the works.





Onshore Substation Works

Work has been progressing rapidly off the A47 between Necton and Little Fransham. Our delivery partners, Siemens Energy, have constructed a new access road from the A47 to the site of our three converter halls. Currently, the converter hall platforms and a new temporary construction compound, complete with offices and welfare facilities, are under construction.

As shown in the images from our event in Dereham and in this pack, the land has been leveled and materials laid down for each converter hall. Here, electricity from our underground cables will be converted from Direct Current back into Alternating Current, ready to be fed into the National Grid.

Work on extending the existing 400kV National Grid substation is also well underway. These efforts are crucial to supply enough electricity to power more than 4 million homes.

Construction of the structures on our converter hall platforms is expected to begin towards the end of the summer. We will notify properties close to future works at least 4 weeks in advance by writing, detailing what to expect. These communications will also be shared with the Parish and District Councils, so they can address any questions and pass queries back to us.

A public information session will be held in Necton 4 weeks before construction

begins. The exact time and date will be announced soon via our e-newsletter. To register for e-news please visit: norfolkwind.me/Enews

Who should I contact?

If you have any questions about the work at these sites, whether completed or upcoming, please contact RWE's Community Liaison Team at:

norfolk@rwe.com

Reinstatement

Our delivery partner Murphy have now completed 1.7km of ducting installation across the western section of the underground cable route. Reinstatement of some of this land has been progressing.

While the land is unusable for farming until the cables are installed in the ducts, non-food crops have been planted on the restored land to maintain soil quality.

Landowners have given excellent feedback to both Murphy and RWE, commending the restored condition of the land.

Who should I contact?

If you have questions, please contact the Local Liaison Officer for J. Murphy and Sons, Victoria Crawford.

E: victoriacrawford@murphygroup.co.uk
M: 07887 877816

Reinstatement works



Converter hall platforms



New contractor compound



Phase 2 compound





Mobilisation Areas

While work has been happening around mobilisation areas in the westernmost 20km section this year, we have also been busy establishing the remainder of the required mobilisation areas along the rest of the route. This includes establishing access points into these areas. For any that require road closures and diversions, or temporary traffic lights, you can see these works on our interactive map linked here.

Murphy's Local Liaison Officer will write to potentially affected properties and local authorities 4 weeks in advance to notify of these works.

Mobilisations in this district include:

Broadland
Mobilisation Areas 6, 7 & 8

Breckland
Mobilisation Areas 9, 10, 10a & 11

What are Mobilisation Areas?

The mobilisation areas are used to facilitate the ducting works. They may contain welfare, parking, offices and storage areas for materials.

Who should I contact?

If you have questions, please contact the Local Liaison Officer for J. Murphy and Sons, Victoria Crawford.

E: victoriacrawford@murphygroup.co.uk
M: 07887 877816

Ecology

Protection of wildlife and the ecology of any area is of utmost importance to RWE. RWE have carried out extensive ecological surveys along the onshore cable route to identify areas of ecological constraint. This includes protected species such as badgers, bats, great crested newts, water voles, and nesting birds. Where identified, more detailed surveys are typically required to provide mitigation measures.

In consultation with statutory nature conservation bodies, mitigation measures are applied to manage the effects of project construction on ecological elements along our cable corridor route. This can include activities such as the collection and re-location of individual or groups of animals (under licence from Natural England where required) and the creation of new habitats elsewhere, away from the areas of construction. This work is carried out well ahead of construction commencing to ensure species have vacated the works area. A further pre-construction survey ahead of the works is then completed by an Ecological Clerk of Works to confirm their absence. Should species of concern be identified

at that point, works are unable to proceed until the issue is resolved.

RWE's operations are carried out within the constraints of the Development Consent Order (DCO), which permits the construction of the cable route. As part of this, RWE is subject to numerous requirements associated with the DCO which relate to ecological mitigation. We are legally obliged to comply with these and we are also required to provide regular annual reports to statutory stakeholders to demonstrate compliance as required under licence.

Badgers

In the UK, badgers and their setts are primarily protected under The Protection of Badgers Act (1992). Where badger setts are located along the cable route and cannot be avoided, various measures are implemented under licence to avoid causing harm. Any works affecting badgers have to be undertaken under licence from Natural England.

Badger licences come with conditions that have to be complied with, such as constructing alternative setts elsewhere away from construction, bait marking surveys (e.g. using peanuts & syrup) of the new sett to encourage its use by badgers, and collection of evidence to confirm its use by the badgers.

Prior to exclusion measures to prevent re-entry to the old sett, a programme of checks are undertaken to confirm that there is no continued use by the badgers.

Permanent closure of a sett is undertaken as a last resort, and any activities associated with RWE's construction works which disturb setts are intensively supervised by a qualified ecologist to avoid harm to individual badgers.

Who should I contact?

If you have questions, please contact the project team via the general email address shown below and we'll connect you with the appropriate team member.

E: norfolk@rwe.com



Overview of existing 400kV National Grid site and the new Norfolk Zone Onshore Substation site

Images

These images are from previous onshore cabling projects completed by Murphy.

They were displayed on easels at the community drop in event to provide participants with visual examples of the type of construction activity they might expect to see in their area as the Norfolk Zone progresses.



Image 1 shows two lengths of cable being safely jointed



Image 2 shows delivery of a reel of cabling



Image 3 shows trenching and cables being laid



Shows a section of typical ducting



The ducting has a diameter of 225mm



A protective tile is installed above the ducting. Both buried under-

Stay Connected



Visit the Norfolk Zone website

www.nowzone.co.uk



Would you prefer a video call with one of our project team? Book a 15 min slot

norfolkwind.me/KITOnline



Get project news straight into your inbox by signing up for e-newsletters

norfolkwind.me/Enews



Send us an email and one of the project team will respond to you

norfolk@rwe.com



Do you need to report something to us urgently? Use our freephone number

0800 019 3517

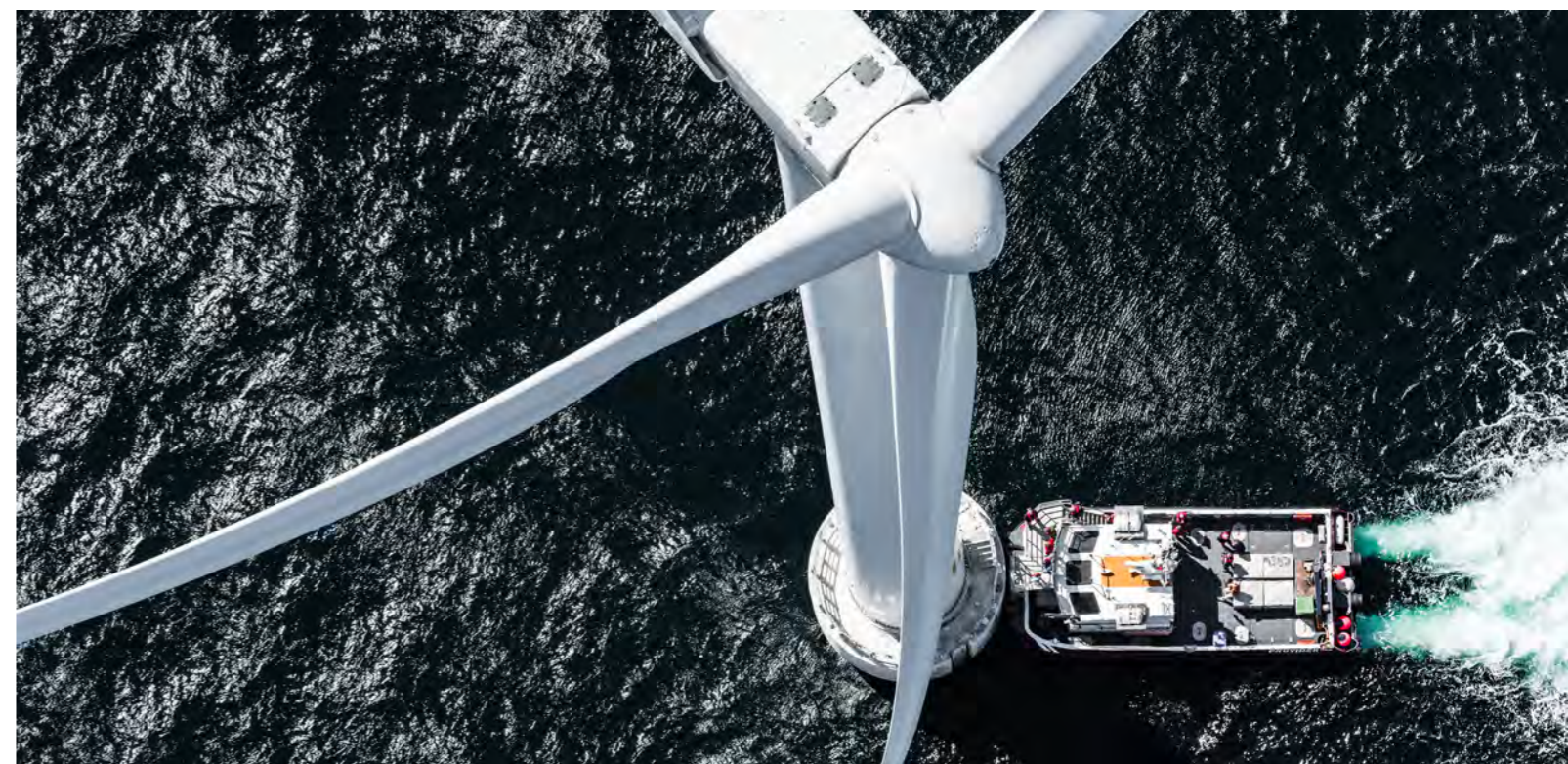


Are you a potential supplier? Find out more about our STEP programme

norfolkwind.me/STEP



Follow our social media channels for news about RWE projects in the UK



Norfolk Offshore Wind Zone
Trigonos
Windmill Hill Business Park
Whitehill Way
Swindon
SN5 6PB
www.nowzone.co.uk