



# Norfolk Offshore Wind Zone

## Witton & Ridlington | Information Pack

A collection of materials shared at public drop-in events in March 2025





## Contents

Section	Page Number
Event poster	4
Investing in East Anglia	6
Horizontal directional drilling (HDD)	8
Trenching & ducting	9
Mobilisation areas	10
Ecology	11
Maps and figures	12-15
Images	16
Stay connected	17

## Hello

Last year, the Norfolk Zone construction team completed installation of 17km of underground ducting in the westernmost section of our cable route. Construction will now continue in 2025 along the remainder of the route, up to Happisburgh on the coast, where our offshore cables will make landfall.

To ensure the local community is kept up to date, we continue to hold public information drop-ins across the cable route, in town/village halls, and public locations like libraries, markets and schools. Information packs from each of these events are made available at

[www.nowzone.co.uk](http://www.nowzone.co.uk). If you have any questions about the Norfolk Zone, please don't hesitate to get in touch. You'll find information on how to do so throughout the pack, and on the last page. Many thanks for your continued interest in our projects.

Best regards,  
**The Norfolk Zone Team**  
[norfolk@rwe.com](mailto:norfolk@rwe.com)



# RWE



## Norfolk Offshore Wind Zone Community Drop-in Information Event

Sharing information about upcoming works in your area

**Where**  
Witton & Ridlington Village Hall,  
Stonebridge Rd, NR28 9TU

**Date**  
11th March 2025

**Time**  
13:00 - 17:00

This event invites local residents and members of the public to drop in and meet with the project team, who will be on hand to share and discuss the latest updates. Key topics will include: upcoming access point creation and associated roadworks, planned for late April, and Horizontal Directional Drilling (HDD) planned for June. We will also discuss the process of mainline ducting installation.

**RWE have begun onshore construction of Norfolk Offshore Wind Zone. Once fully operational, the Norfolk Zone could generate 4.2GW of electricity, which is enough to power more than 4 million UK households.**

[www.nowzone.co.uk](http://www.nowzone.co.uk)

Contact us: [norfolk@rwe.com](mailto:norfolk@rwe.com)



# Investing in East Anglia

## £4.4 million investment boost for local businesses as work on Norfolk Offshore Wind Zone ramps up

In a major boost for the regional economy, dozens of local businesses have scooped **£4.4 million** worth of contracts from main contractor on the Norfolk Offshore Wind Zone, J. Murphy & Sons Limited.

Contracts have been awarded to **36 East Anglian businesses**, providing opportunities for hundreds of local people to work on the first stages of construction of the Norfolk Offshore Wind Zone. Local companies are using a workforce recruited from nearby towns and villages, with many more set to be employed. Norfolk Offshore Wind Zone will directly support around 1,000 jobs a year during the seven-year construction programme.

Denise Hone, senior stakeholder and community engagement manager for the Norfolk Offshore Wind Zone, said: "Since we started planning the project nearly 10 years ago, we have been working with local companies. It has always been our plan to invest as much as we can in Norfolk and its businesses because the wind farms will be operating for more than 30 years.

"To see this coming to fruition - seeing small, local businesses supplying their

services and benefitting from playing a part in this world-leading wind farm - is wonderful. It's evidence that we are doing what we have always said we would do: work in Norfolk, with Norfolk and for Norfolk."

Over the first 11 months of the project, 36 companies from Norfolk and Suffolk

36

have secured contracts with Murphy. So far, £4.4 million has been invested in and spent with East Anglian businesses. As the project progresses through 2024, services such as drainage, scaffolding, sampling, cleaning, catering, and horizontal directional drilling (HDD) will be required.

450

By 2025, the project will hit its peak work period. Murphy plans to create 8 apprentice positions, employ 450 ground staff, install 540 km of ducting, 120 km of fencing, and require 77,000 m<sup>3</sup> of sand and backfill for the works.





## Horizontal Directional Drilling (HDD)

The HDD programme in the westernmost 20km of the onshore cable route began in February this year. Since then, we have completed 12 drills beneath sensitive areas. Our HDD programme now continues into the central and eastern regions of the cable route.

### What is HDD?

A Horizontal Directional Drill or HDD is a non-intrusive way to lay the ducting underground. Rather than having to dig a trench, the process will involve two drills per cable. Initially, a pilot drill will be used to tunnel underground for the required length. Once the pilot drill is out on the opposite side, a larger drill head (Bore) is fitted to create the diameter needed for the ducting to be installed.

### Why are we doing HDD?

An HDD will be used in all areas along the cable route where using a trenching technique would have an environmental impact (such as at Wendling Carr) or when the cable route needs to cross major roads, such as the A47.

### Who should I contact?

If you have questions, please contact the Local Liaison Officer for J. Murphy and Sons, Victoria Crawford.

E: [victoriacrawford@murphygroup.co.uk](mailto:victoriacrawford@murphygroup.co.uk)  
M: 07887 877816

## Trenching & Ducting

### What are these works?

Initially, the construction team will carefully strip away the top and subsoil, stockpiling them as close as possible to where they have been removed. This will allow for a haul road to be created alongside the area where the cable ducting will be laid.

Specialised machinery will then excavate a trench, ready for the ducting to be laid. Once the ducting is laid and levelled, a protective tile will cover the ducting before the trench is backfilled.

### When will this work happen?

To date, we have completed 136km in the westernmost section. It is anticipated that we will continue the trenching and ducting installation in the central and eastern

regions in spring/early summer 2025, starting from the River Wensum and heading eastward to Happisburgh.

### Who should I contact?

If you have questions, please contact the Local Liaison Officer for J. Murphy and Sons, Victoria Crawford.

E: [victoriacrawford@murphygroup.co.uk](mailto:victoriacrawford@murphygroup.co.uk)  
M: 07887 877816



## Mobilisation Areas

While work has been happening around mobilisation areas in the westernmost 20km section this year, we have also been busy establishing the remainder of the required mobilisation areas along the rest of the route. This includes establishing access points into these areas. For any that require road closures and diversions, or temporary traffic lights, you can see these works on our [interactive map linked here](#).

Murphy's Local Liaison Officer will write to potentially affected properties and local authorities 4 weeks in advance to notify of these works.

Mobilisations in this district include:

**Broadland**  
Mobilisation Areas 6, 7 & 8

**Breckland**  
Mobilisation Areas 9, 10, 10a & 11

### What are Mobilisation Areas?

The mobilisation areas are used to facilitate the ducting works. They may contain welfare, parking, offices and storage areas for materials.

### Who should I contact?

If you have questions, please contact the Local Liaison Officer for J. Murphy and Sons, Victoria Crawford.

E: [victoriacrawford@murphygroup.co.uk](mailto:victoriacrawford@murphygroup.co.uk)  
M: 07887 877816

## Ecology

Protection of wildlife and the ecology of any area is of utmost importance to RWE. RWE have carried out extensive ecological surveys along the onshore cable route to identify areas of ecological constraint. This includes protected species such as badgers, bats, great crested newts, water voles, and nesting birds. Where identified, more detailed surveys are typically required to provide mitigation measures.

In consultation with statutory nature conservation bodies, mitigation measures are applied to manage the effects of project construction on ecological elements along our cable corridor route. This can include activities such as the collection and re-location of individual or groups of animals (under licence from Natural England where required) and the creation of new habitats elsewhere, away from the areas of construction. This work is carried out well ahead of construction commencing to ensure species have vacated the works area. A further pre-construction survey ahead of the works is then completed by an Ecological Clerk of Works to confirm their absence. Should species of concern be identified

at that point, works are unable to proceed until the issue is resolved.

RWE's operations are carried out within the constraints of the Development Consent Order (DCO), which permits the construction of the cable route. As part of this, RWE is subject to numerous requirements associated with the DCO which relate to ecological mitigation. We are legally obliged to comply with these and we are also required to provide regular annual reports to statutory stakeholders to demonstrate compliance as required under licence.

### Badgers

In the UK, badgers and their setts are primarily protected under The Protection of Badgers Act (1992). Where badger setts are located along the cable route and cannot be avoided, various measures are implemented under licence to avoid causing harm. Any works affecting badgers have to be undertaken under licence from Natural England.

Badger licences come with conditions

that have to be complied with, such as constructing alternative setts elsewhere away from construction, bait marking surveys (e.g. using peanuts & syrup) of the new sett to encourage its use by badgers, and collection of evidence to confirm its use by the badgers.

Prior to exclusion measures to prevent re-entry to the old sett, a programme of checks are undertaken to confirm that there is no continued use by the badgers.

Permanent closure of a sett is undertaken as a last resort, and any activities associated with RWE's construction works which disturb setts are intensively supervised by a qualified ecologist to avoid harm to individual badgers.

### Who should I contact?

If you have questions, please contact the project team via the general email address shown below and we'll connect you with the appropriate team member.

E: [norfolk@rwe.com](mailto:norfolk@rwe.com)

TMO/34483

AC14



SURVEYED	GOOGLE DRIVEN
N	Y

**Closure details:**  
The Street, closed from a point 270m north of junction with Nashs Lane, closed for a further 170m north .

TMO-PL-009rev20 | Review due - 01/12/24

**TMO Highways**  
Building 1, Roy Humphrey Site  
A140, Eye, Suffolk, IP23 8AW  
Tel:01379 676462

**Customer Details:**



**Drawing Details:**

TM Type: Road Closure  
Location: The Street, Ridlington

Planner: Ryan Smith

Email: ryan.smith@tmohighways.co.uk

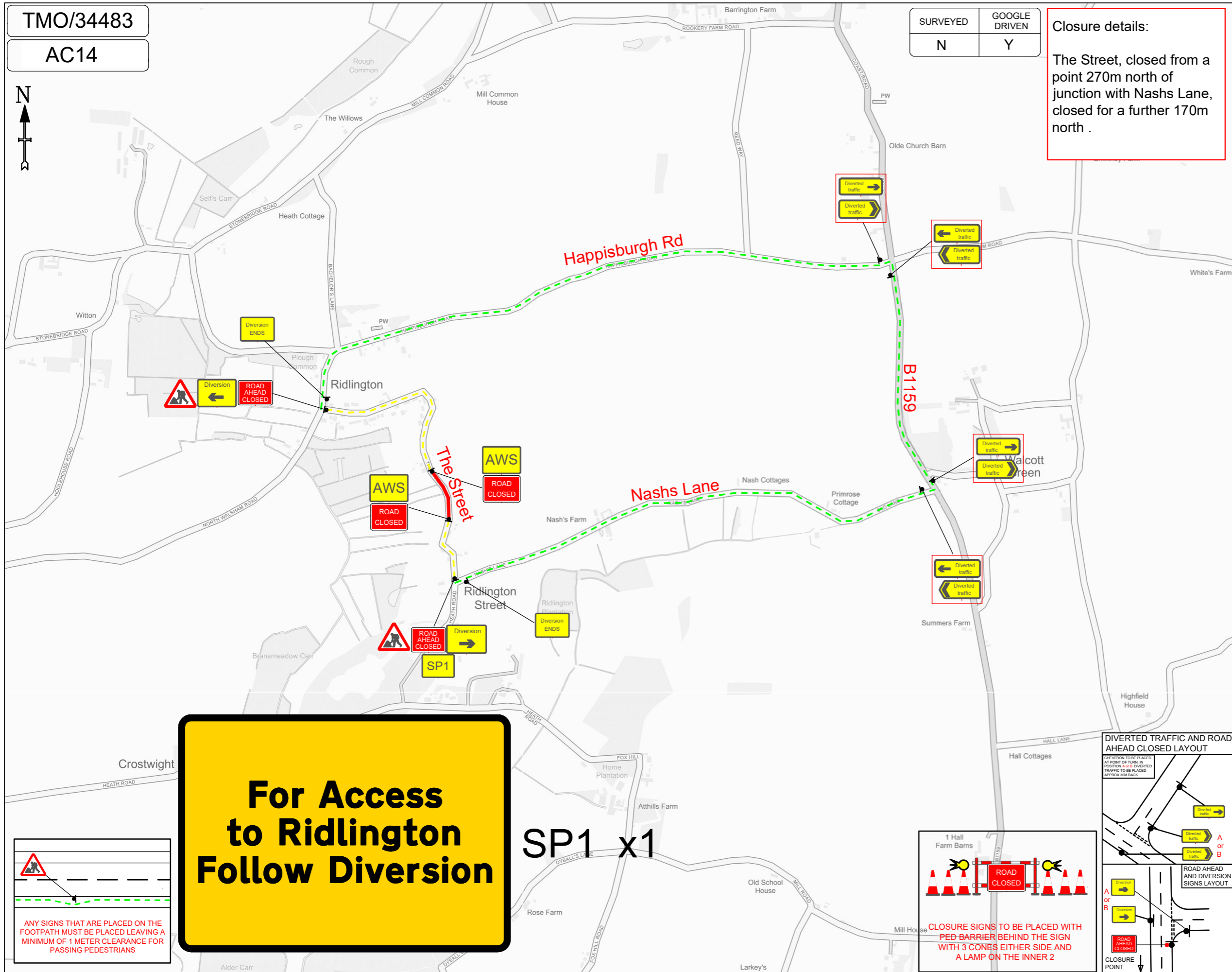
**Key**

- Sign Diagram
- AWs - Advances Location
- Road Closure Location
- Access Only
- Diversion Route
- 12AB Install Signs

**Drawn/Revised**

Drawn by	RS	Revised by	-	Revision number	00
Date	12.12.23	Date	-		

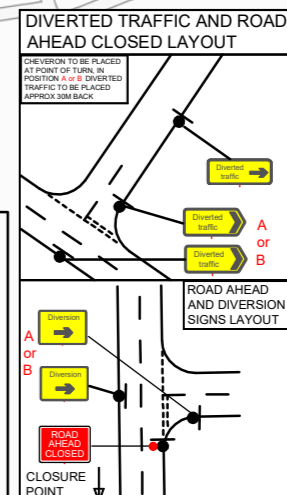
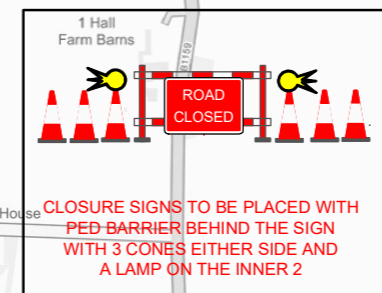
**Main Diversion Route;**  
**Happisburgh Road,**  
**B1159,**  
**Nashs Lane,**  
**and Vice Versa**



**For Access to Ridlington Follow Diversion**

**SP1 x1**

ANY SIGNS THAT ARE PLACED ON THE FOOTPATH MUST BE PLACED LEAVING A MINIMUM OF 1 METER CLEARANCE FOR PASSING PEDESTRIANS



TOTAL NUMBER OF SIGNS:- 21

Drawing checked via email by: TG

**PLEASE NOTE :**  
a. All Traffic Management to comply with current chapter 8 and Safety at Street Works and RoadWork's (A code of practice).  
b. All road markings and signage to conform to the Traffic Signs Regulations and General Directions 2016.

This Drawing has been produced for the specific client and project as defined in drawing and customer details and is not intended for any other purpose.


TMO/34483 AC18

SURVEYED	GOOGLE DRIVEN
/ N	Y /

**Closure details:**  
 Hoolehouse Road closed from a point 400m north of the junction with North Walsham Road closed for a further 100m north

TMO-PL-009rev19 Review due - 01/12/23

**TMO Highways**  
 Building 1, Roy Humphrey Site  
 A140, Eye, Suffolk, IP23 8AW  
 Tel:01379 676462

**Customer Details:**  
  
 WORLD-CLASS INFRASTRUCTURE  
 Customer Ref: AC16  
 Agent: Alan Dixon

**Drawing Details:**  
 TM Type: Road closure  
 Location: Hoolehouse Road, Witton, NR28 9UD

Planner: Andrew Rayner  
 Email: andy.rayner@tmohighways.co.uk

**Key**

- SP - Sign Diagram
- AWS - Advances Location
- Red line - Road Closure Location
- Yellow line - Access Only
- Green dashed line - Diversion Route
- Blue dashed line - 12AB Install Signs

**Drawn/Revised**

Drawn by	A.R	Revised by	Revision number	00
Date	19/12/23	Date	-	

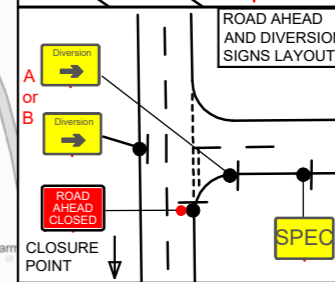
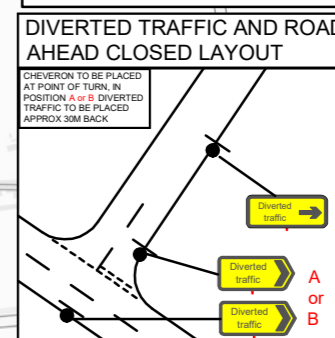
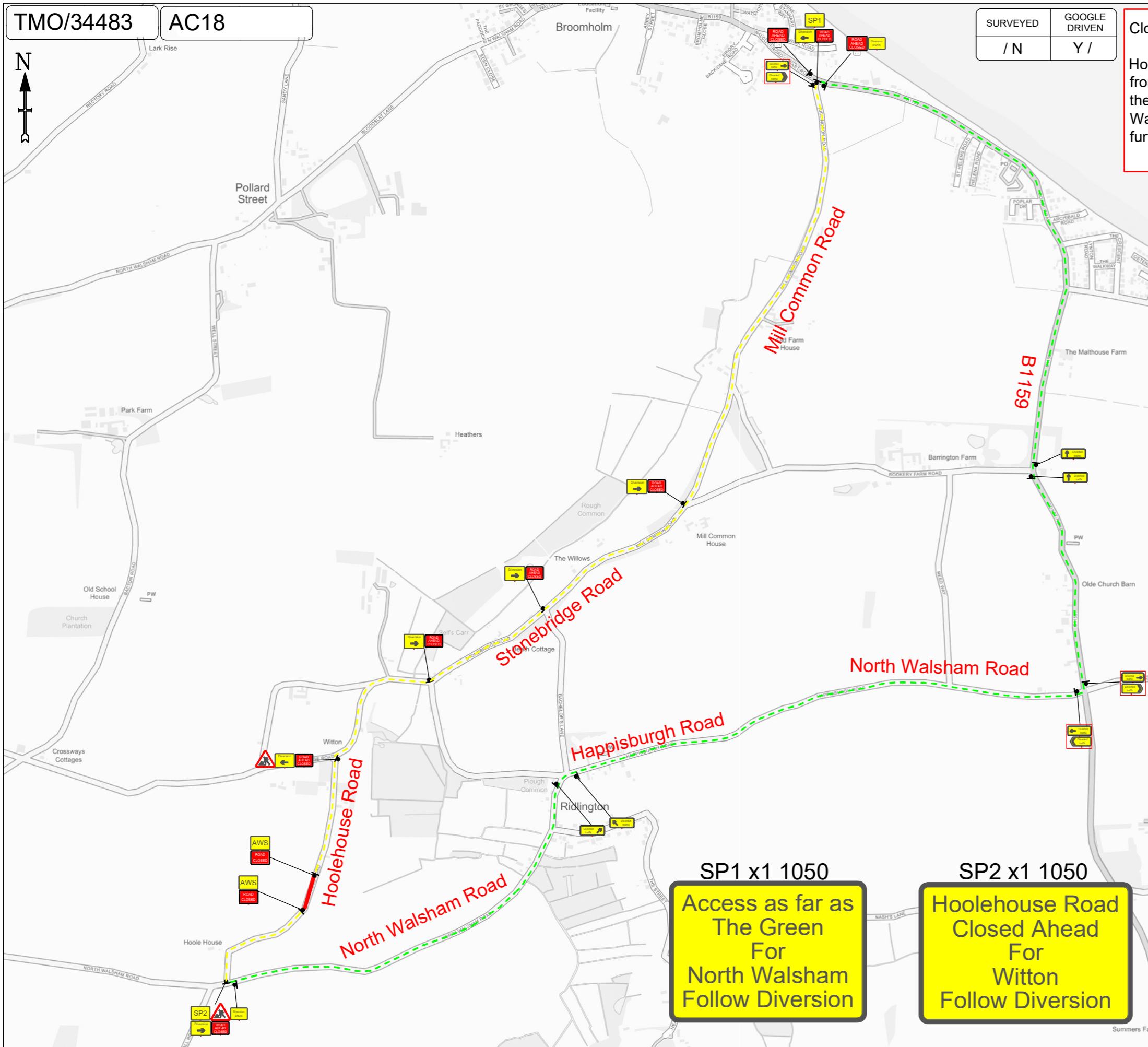
**Main Diversion Route;**  
 North Walsham Road,  
 Happisburgh Road,  
 North Walsham Road,  
 B1159,  
 and Vice Versa

TOTAL NUMBER OF SIGNS:- 29

Drawing checked via email by; A.R

**PLEASE NOTE :**  
 a. All Traffic Management to comply with current chapter 8 and Safety at Street Works and RoadWork's (A code of practice).  
 b. All road markings and signage to conform to the Traffic Signs Regulations and General Directions 2016.

This Drawing has been produced for the specific client and project as defined in drawing and customer details and is not intended for any other purpose.



SP1 x1 1050  
 Access as far as The Green For North Walsham Follow Diversion

SP2 x1 1050  
 Hoolehouse Road Closed Ahead For Witton Follow Diversion



# Images

These images are from previous onshore cabling projects completed by Murphy.

They were displayed on easels at the community drop in event to provide participants with visual examples of the type of construction activity they might expect to see in their area as the Norfolk Zone progresses.



Image 1 shows two lengths of cable being safely jointed



Image 2 shows delivery of a reel of cabling



Image 3 shows trenching and cables being laid



Shows a section of typical ducting



The ducting has a diameter of 225mm



A protective tile is installed above the ducting. Both buried under-

# Stay Connected



Visit the Norfolk Zone website

[www.nowzone.co.uk](http://www.nowzone.co.uk)



Would you prefer a video call with one of our project team? Book a 15 min slot

[norfolkwind.me/KITOnline](http://norfolkwind.me/KITOnline)



Get project news straight into your inbox by signing up for e-newsletters

[norfolkwind.me/Enews](http://norfolkwind.me/Enews)



Send us an email and one of the project team will respond to you

[norfolk@rwe.com](mailto:norfolk@rwe.com)



Do you need to report something to us urgently? Use our freephone number

0800 019 3517



Are you a potential supplier? Find out more about our STEP programme

[norfolkwind.me/STEP](http://norfolkwind.me/STEP)



Follow our social media channels for news about RWE projects in the UK



Norfolk Offshore Wind Zone  
Trigonos  
Windmill Hill Business Park  
Whitehill Way  
Swindon  
SN5 6PB  
[www.nowzone.co.uk](http://www.nowzone.co.uk)