



RWE

Norfolk Offshore Wind Zone Newsletter

Autumn 2024

For more information
visit the Norfolk Zone
website

www.nowzone.co.uk

Project Update

Dear Neighbours,

We are pleased to bring you the latest edition of our new-look community newsletter, dedicated to keeping you informed and engaged with all the happenings on the Norfolk Offshore Wind Zone projects.

In this autumn newsletter, we'll provide updates on the progress of onshore construction, along with a special section on ecology. Here, you'll gain insight into how the project is helping preserve and protect local wildlife while promoting biodiversity—work that remains firmly at the heart of our commitment to environmental stewardship.

Another exciting announcement in this edition is the launch of the Norfolk Offshore Wind Zone Community Fund, which is designed to support communities across rural Norfolk to create places where people want to live and thrive, now and in the future.

For younger readers, those looking for career changes or any other aspiring wind energy professionals, we'll be giving you an introduction to our newest interns on the Year in Industry programme and providing information about other career and development opportunities at RWE.

Additionally, we want to remind you of all the ways you can stay connected with us. Whether you prefer updates via our website, at in-person events or in virtual meetings, there are plenty of ways to obtain information about the Norfolk Zone's progress, ask questions, or share your ideas. You can also reach out directly to our project team, who are always ready to listen and provide information.

As always, we are grateful for your continued interest in the Norfolk Zone.

Warm regards,

Denise Howe

Stakeholder Engagement Manager



Construction

Our progress on the ground



Our delivery partner Siemens Energy have been making great progress with early works on the ground at our substation site near Necton. We'll provide a more detailed update about work at the substation site in our next newsletter.

In Spring of this year, the Norfolk Zone construction team began laying the ducting for our onshore cables in the westernmost 20km section of the route, from Necton to the River Wensum. In recent weeks, our project delivery contractors Murphy have commenced construction activities along the remainder of the route, from River Wensum eastwards to Happisburgh on the coast, where our offshore cables will make landfall. This section summarises the main activities.

Trenching & Ducting

This process involves carefully stripping away the top and subsoil and stockpiling them as close as possible to where they have been removed to allow for a haul road to be created alongside the area where the cable ducting will be laid.

Specialised machinery will then excavate a trench, ready for the ducting to be laid. Once the ducting is laid and levelled, a protective tile will cover the ducting before the trench is backfilled.

Horizontal Directional Drilling (HDD)

The works we are undertaking include Horizontal Directional Drilling (HDD) which is a technique used in certain specific circumstances to minimise

impact of undergrounded cable laying. The HDD programme in the westernmost 20km of the onshore cable route began in February this year. Since then, we have completed 12 drills beneath sensitive areas. Our programme of HDDs also now continues into the central and eastern regions of the cable route.

HDD will be used in areas along the cable route where using a trenching technique would have an environmental impact (such as at Wendling Carr) or when the cable route needs to cross major roads, such as the A47.

Mobilisation Areas

Mobilisation areas are used to facilitate the ducting works. They may contain welfare, parking, offices and storage areas for materials. There are numerous mobilisation areas situated at points along the 60km cable route. For any works that require road closures and diversions, or temporary traffic lights, you can see these updates on our interactive map. [Click here to open the map](#) in a new browser window.



Community Out & About in Norfolk



UEA Careers Day

On 9th October, we attended a careers event at UEA, showcasing opportunities in our industry. The event was well-attended by students, and our team was excited to represent the cutting-edge projects shaping the future of energy in the region.

We thoroughly enjoyed engaging with so many students eager to learn about careers in offshore wind and other renewable energy sectors. It was inspiring to meet young people passionate about contributing to a greener future, and we're excited to see how their enthusiasm will shape the energy industry in the years to come.

Public Information Events

Did you know that we hold public information drop-in style events at regular intervals at locations along the cable route?

The next two events are in Necton on 22nd and Happisburgh on 24th October. You can find details about the events and download information packs showing materials from these events on the project website. [Click here to visit the Events page.](#)



Supporting NARS

We had a fantastic evening supporting NARS (Norfolk Accident Rescue Service) at their charity ball on Saturday, 12th October.

The event highlighted the incredible work of NARS, a team of dedicated volunteer doctors, nurses, paramedics, and first responders. Emotional stories were shared by individuals whose lives had been saved by NARS, reminding us all of the immense value of this cause. An amazing £22,000 was raised during the event - you can read more about their work on their website:

www.nars.org.uk



Community Fund

Investing in Norfolk

What is the Norfolk Offshore Wind Zone Community Fund?

The Norfolk Zone Community Fund is designed to empower local communities to grow greener by helping to build sustainable, resilient and 'Future Bright' rural communities in Norfolk. The focus of the fund has been shaped by a programme of consultation, surveys and workshops with local communities which stretches over 8 years, throughout development of the offshore wind projects.

Launch of the Discovery Phase & applications

The Discovery Phase is an initial funding round through which fund administrators Norfolk Community Foundation and RWE will seek to build an understanding of the specific needs of the communities living nearest to the onshore infrastructure of the wind farm projects.

This 1 year Discovery Phase will offer grants of up to £10,000 from an initial pot of £100,000. In this first year of funding, the fund will consider applications from the area we refer to as Zone 1. Zone 1 encompasses the communities located closest to the infrastructure for the wind farms, from Necton in the west to Happisburgh in the east. This reflects the communities that Norfolk Offshore Wind Zone have been consulting and engaging with since the outset of the projects, through planning and now into the construction phase.

For information about the application process and criteria for the Discovery Phase, please visit the Norfolk Community Foundation website.

Introducing Norfolk Community Foundation

We are pleased to announce that following a competitive tender process, Norfolk Community Foundation has been appointed as independent administrator of Norfolk Offshore Wind Zone Community Fund.

Norfolk Community Foundation has been working with Norfolk communities for over twenty years. Their grant making experience, enthusiasm and passion for local communities, and community-led approach make them an ideal fit for the community investment steward role.

Recruiting the Fund decision-making panel

Would you like to be involved and help support future bright initiatives in your area? Information about the decision-making panel, the roles of its members, and how to express interest in participating can be found on the NCF website.

norfolkwind.me/CommunityFund



Stay Connected

Information & where to get it

As we continue to make progress with construction on the Norfolk Zone projects, we know that making ourselves available and providing information is more important than ever. We're committed to keeping you informed and making it easy for you to reach out whenever you need. Whether you want updates on construction, details about upcoming events, or access to maps and resources, we've made sure there are plenty of ways to stay in the loop.

Here's a quick guide on ways you can stay connected with us throughout the project:

1. Website

Our newly redesigned website is your best starting point for all things related to the project. Visit the website regularly to follow our progress, download materials, and stay informed about important events. Save www.nowzone.co.uk in your browser favourites.

2. E-newsletters

Sign up for our e-newsletter to get the latest updates straight to your inbox. Whether it's news about construction activity, event announcements or Community Fund updates, subscribing to our e-news ensures you won't miss a thing. You can subscribe at this link: norfolkwind.me/Enews

3. Online Keep in Touch sessions

We know it's not always easy to travel to in-person events or to find exactly what you need on websites, so we host monthly Keep in Touch sessions via video call. You can book your own 15 minute slot with our project team by visiting this webpage: norfolkwind.me/KITOnline

4. In-Person Events

For those who prefer face-to-face interaction, we also host regular in-person events where you can meet our team, see project plans up close, and ask any questions you may have. Keep an eye on our events calendar for upcoming dates and locations: norfolkwind.me/infoevents

5. Interactive Map

The Norfolk Zone project is big, and the cable route alone stretches 60km, so the Interactive Map is a useful way of exploring the project and its associated construction activities in detail from home. It provides updates on where and when construction is happening, so you can stay informed about progress and potential disruptions: norfolkwind.me/iMap

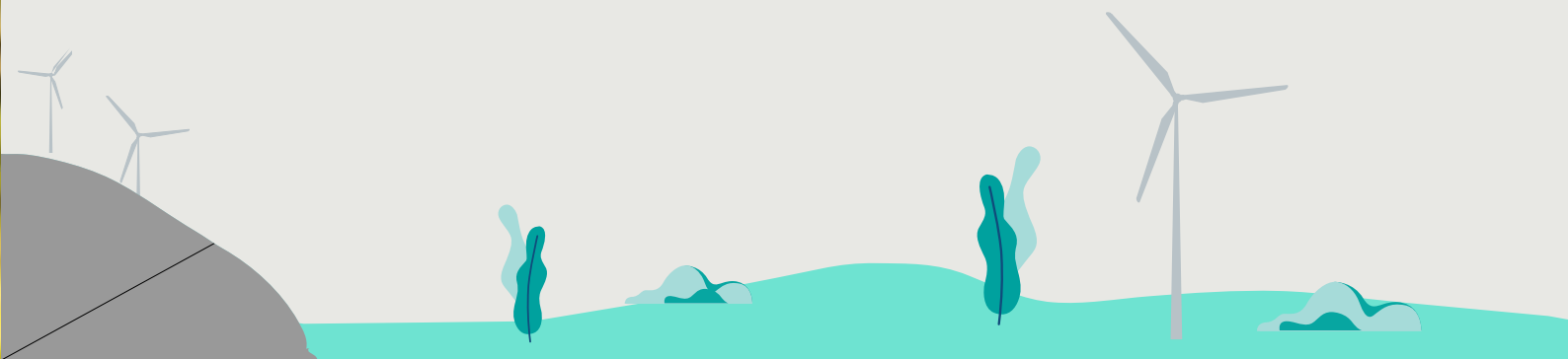
6. Information Packs

Whenever we host an in-person event, we create and publish an information pack with the materials presented. This ensures that the content is accessible not only to those who attended but also to those who couldn't make it.

The information packs typically include updates on local construction activities, along with maps and drawings to highlight key details such as road closures or diversions. You can find information packs on the Events page: norfolkwind.me/infoevents

7. Email

We know that sometimes you just want to keep it simple and send a quick note, so we're always happy to receive your questions or comments via email too. If you're not sure who you need to contact, just drop us a note using the main project email address and we'll find the right member of the project team to respond: norfolk@rwe.com



Skills & Education

Inspiring the future workforce

Skills development is a big part of the work we do on the Norfolk Zone projects. A Year in Industry (YII), also known as an industrial placement or commercial placement, is a year-long work experience opportunity that students can undertake as part of their university degree. Students work in a role that's directly related to their field of study, usually between their second and third years. This will be our sixth year of hosting YII students on the Norfolk Zone projects, and we're very pleased to introduce this year's interns, Niko and Holly. You can follow their journey with RWE by signing up for Norfolk Zone e-news updates.

Register
for
e-news

Year in Industry

Introducing Niko

Niko has joined the Stakeholder Engagement team as an intern for the year 2024-25. We asked him to write a few words by way of introduction. Welcome to the team, Niko!

"Hello everyone, my name is Nkosinathi Mwanza, please however do feel free to refer to me as Nkosi or Niko. I am from Lusaka, Zambia and I have been in the United Kingdom for just over 3 years now.

I am a year in industry student at RWE working as an Assistant Community Liaison Officer. I am at the University of Essex in Colchester pursuing a BSc in Economics and will be looking at completion in a couple of years from now.

Outside of work and school, I like to play football and go to the gym. I love food, fashion and music. I am currently in the process of learning how to play a musical instrument (just not decided which one yet). A weekend for me involves football, music, lots of food and Church."

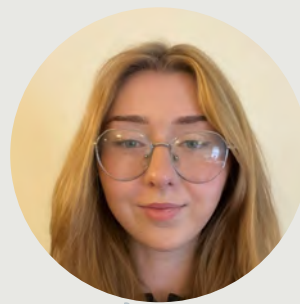


Introducing Holly

We're also very happy to have Holly on board for her Year in Industry internship. Holly joined us in August and will be working with the Norfolk Zone's Operations & Maintenance team. Welcome to the team, Holly!

"My name is Holly Walker, I'm 22 years old and I'm originally from Montrose, Scotland. I studied Mechanical Engineering at the University of Strathclyde and I'll go back to obtain my master's degree after the internship. I'm in the Operations & Maintenance (Design and Implementation) team at RWE, working on the Norfolk Zone projects.

In my free time I love to wander around charity shops in the hope of finding unique items - especially vintage bags. I also really enjoy painting while listening to podcasts - my current favourite is No Such Thing As A Fish. Travelling is also a big passion of mine and I take every opportunity to go abroad whether that's with work or in my personal life - 7 countries and counting this year!





Protecting habitats Ecology

Protection of wildlife and the ecology of any area is of utmost importance to RWE. In this edition of the newsletter we'd like to share details of some of the careful measures and mitigation activities we undertake to protect wildlife and natural habitats in the vicinity of our wind farm infrastructure and construction sites.

Protecting ecology during construction is crucial to minimising the environmental impact and ensuring long-term health of local ecosystems. Construction activities can disrupt natural habitats, displace wildlife, and alter the landscape, potentially causing lasting harm if not carefully managed. By implementing protective measures—such as habitat preservation, species monitoring, and environmentally sensitive design—we can safeguard biodiversity, maintain the balance of ecosystems, and support the overall resilience of the environment.

Prioritising ecological protection not only ensures regulatory compliance but also aligns with our commitment to sustainable development and responsible stewardship of natural resources.

The Norfolk Zone project team has carried out extensive ecological surveys along the onshore cable route to identify areas of ecological constraint. This includes protected species such as badgers, bats, great crested newts, water voles, and nesting birds. Where identified, more detailed surveys are typically required to provide mitigation measures.

In consultation with statutory nature conservation bodies, mitigation measures are applied to manage the effects of project construction on ecological elements along our cable corridor route. This can include activities such as the collection and re-location of individual or groups of animals (under licence from Natural England where required) and the creation of new habitats elsewhere, away from the areas of construction. This work is carried out well ahead of construction commencing to ensure species have vacated the works area. A further preconstruction survey ahead of the works is then completed by an Ecological Clerk of Works to confirm their absence. Should species of concern be identified at that point, works are unable to proceed until the issue is resolved.

RWE's operations are carried out within the constraints of the Development Consent Order (DCO), which permits the construction of the cable route. As part of this, RWE is subject to numerous requirements associated with the DCO which relate to ecological mitigation. We are legally obliged to comply with these and we are also required to provide regular annual reports to statutory stakeholders to demonstrate compliance as required under licence.

If there are other ecological topics you'd like us to cover in the next newsletter, please get in touch!



Protecting habitats

Badgers

In the UK, badgers and their setts are primarily protected under The Protection of Badgers Act (1992). Where badger setts are located along the cable route and cannot be avoided, various measures are implemented under licence to avoid causing harm. Any works affecting badgers have to be undertaken under licence from Natural England. There have been some badger protection works at locations along our cable route so we thought local residents might be interested to read more about what we're doing, and why we're doing it.

Finding the badger setts

To identify areas used by badgers, we search for signs such as digging, feeding marks, dung pits, footprints, and hair caught on fences. Badgers live in underground setts, and every entrance is mapped to determine how close they are to planned work sites. To check if the holes are in use, we place sticks at the entrances; if disturbed, this indicates a badger's presence. These sticks are monitored regularly for movement and hair traces, so it's important that they aren't touched or moved during this process.

Monitoring

Understanding badger territories is also crucial. We use a mixture of peanuts and syrup, with colored pellets, placed at setts for the badgers to eat. The pellets show

up in their dung, which is often found at territory edges, helping us map each sett's territory. Since badgers use different setts throughout the year and may open new holes, surveys need to be repeated frequently to account for any changes.

Relocation

Prior to exclusion measures to prevent re-entry to the old sett, a programme of checks are undertaken to confirm that there is no continued use by the badgers. In some cases, badgers need an alternative shelter, so an artificial sett is created using wooden boxes and plastic pipes covered with soil. Snacks like apples, peanuts, oats, and syrup are placed at the entrances to attract the badgers. Cameras are used to monitor whether the badgers are using the new sett.

Who should I contact if I have questions?

If you have questions, please contact the project team via the general email address shown below and we'll connect you with the appropriate team member.

E: norfolk@rwe.com





Careers at RWE Join the energy mix

RWE in the UK is full of opportunity. With various locations across the country, where exciting and inspiring work is happening – now is the time to join us to help shape the future of energy.

Ambitious goals, passion and dedication outline the way that we work. Across our companies in the UK, we strive for a common goal – to provide a sustainable future. Find out more about careers at RWE: uk.rwe.com/career/

Suppliers STEP Programme

Find out more about the STEP programme, registering for the platform and our approach to offshore wind supplier engagement at the STEP webpage: norfolkwind.me/STEP

Informing & Involving Feedback

We are always open to suggestions for content in our future newsletters. Your feedback helps us ensure that we are providing the information that matters most to you.

If there are specific topics you'd like us to cover, please don't hesitate to let us know. We value your input and look forward to making our newsletters more useful and engaging for everyone.

Get in touch



www.nowzone.co.uk

norfolk@rwe.com

